

Chapter 2 - Installation

Install Ruby, Rails, Hobo and the SQLite Database Engine

The following instructions are tailored for the most commonly used operating system in the enterprise: Windows. We also include instructions for installing the self-configuring database engine, SQLite, which is the default engine used by Hobo and Rails when in development mode. This allows you to focus on learning Hobo, not configuring a database. We provide instructions for configuring Oracle and MySQL in the “Recipes” section of the book.

Most books and online tutorials on Ruby and Rails are tailored to Mac users, and pay lip service to Windows, as the MacBook Pro is the weapon of choice in the Rails community. Nevertheless, although the authors of this book own and prefer Mac technology, most of us are required to use Windows PCs as workstations in most current client situations.

This book assumes that many of you are trying out Hobo, Ruby, and Rails for the first time and that a large percentage will also be using either Windows XP or Windows Vista on a day-to-day basis. We don't want that minor factor to limit your development enjoyment. Mac and Linux users may also easily read this book, as Hobo is easy to install in these environments.

So--get your favorite web browser fired up, have a good cup of coffee handy, and follow the instructions below.

If you already have Ruby and Rails installed, you can skip this section and instead go straight to resources at:

<http://hobocentral.net/two-minutes/>

If you have a Mac with OS X, Ruby 1.8.6 and Rails 1.2.3 are pre-installed. You can skip step 1 and go straight to step2.

The following is a good blog resource for alternative installation for Mac users:

<http://hivelogic.com/articles/2008/02/ruby-rails-leopard>

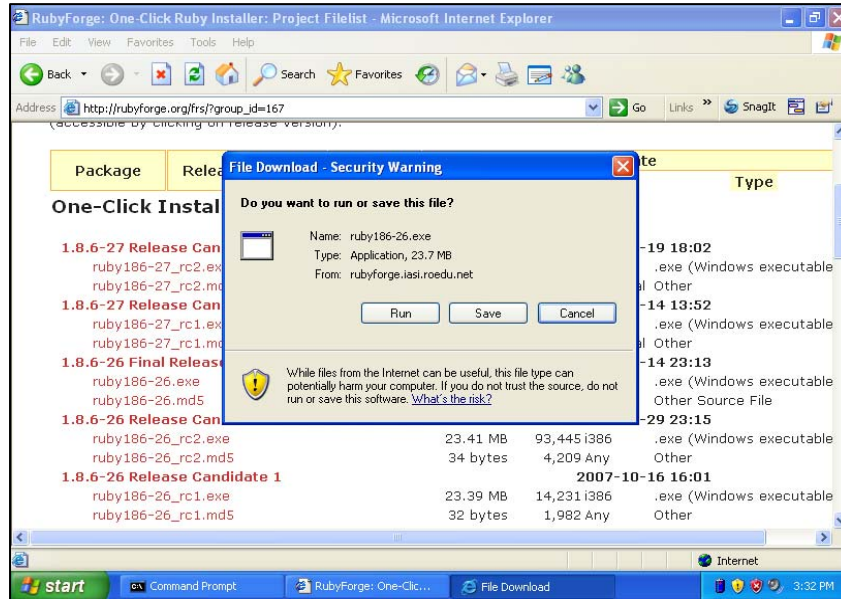
For Linux aficionados:

<http://linuxtips.today.com/2009/01/04/installing-ruby-on-rails-on-linux/>

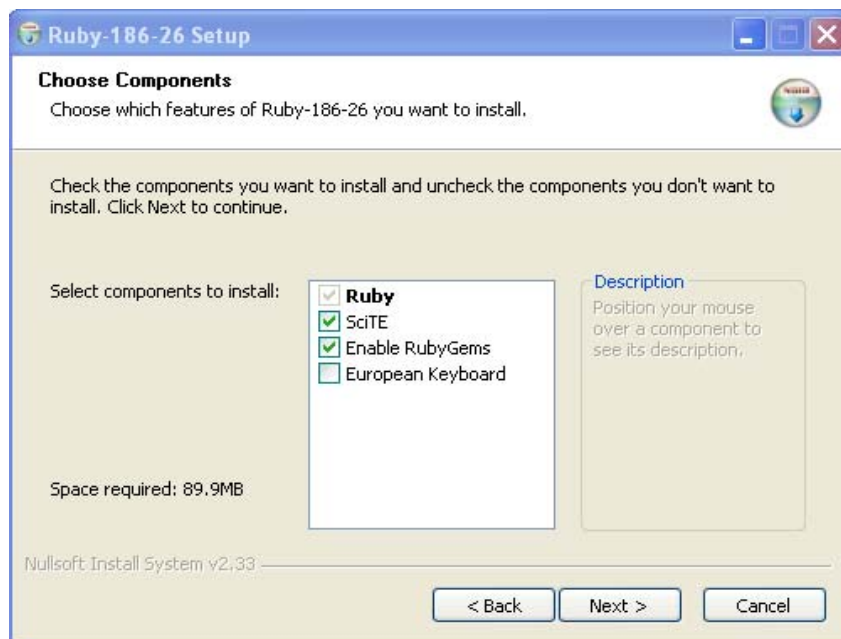
CHAPTER 2 – INSTALLATION

1. Download the latest final release Ruby version as a Windows installer executable file (ruby186-26.exe as of January, 2009) from rubyforge.org:

http://rubyforge.org/frs/?group_id=167

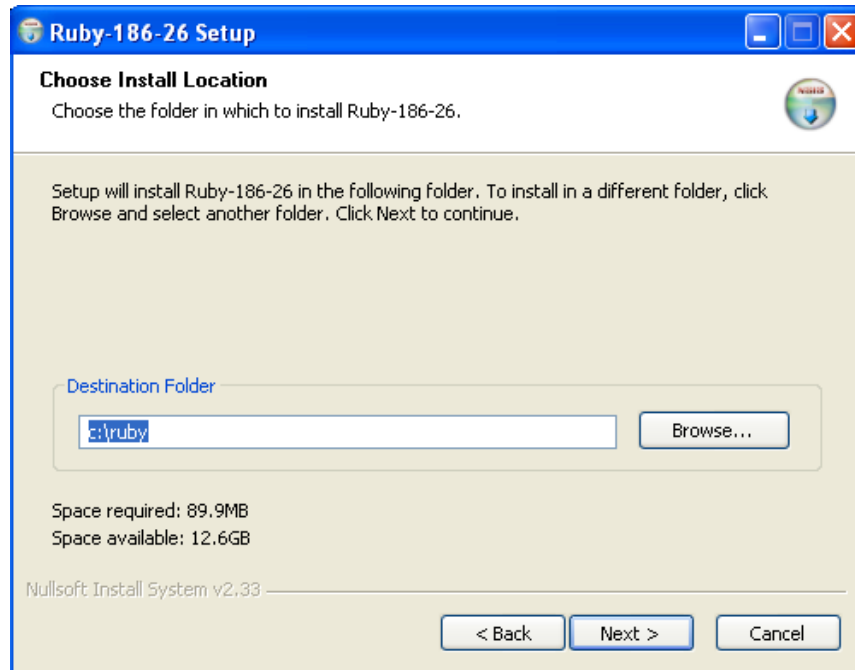


Double click on the file **ruby186-26.exe** to run the installer. Select the “Scite” (a good freeware program editor) and the “Enable RubyGems” options:

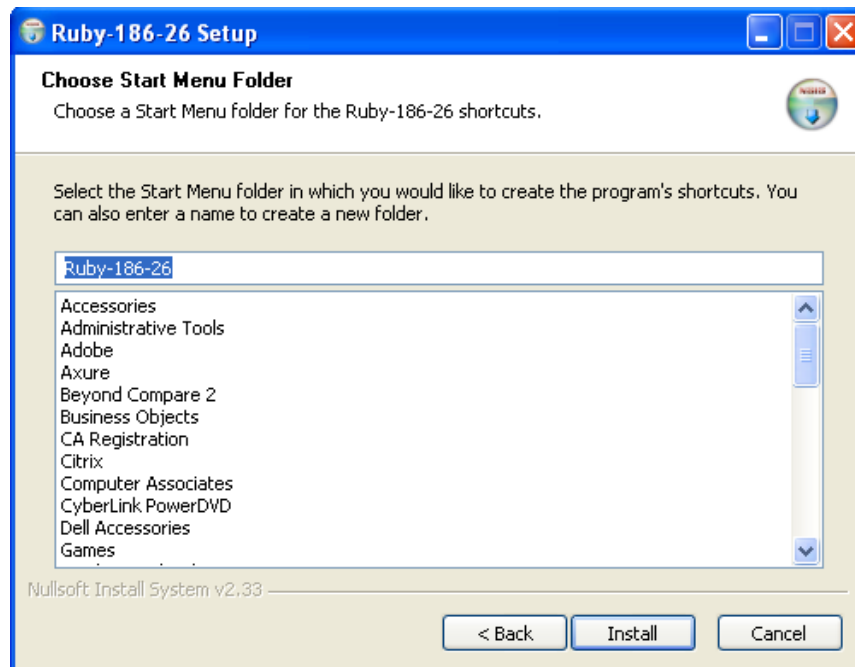


CHAPTER 2 – INSTALLATION

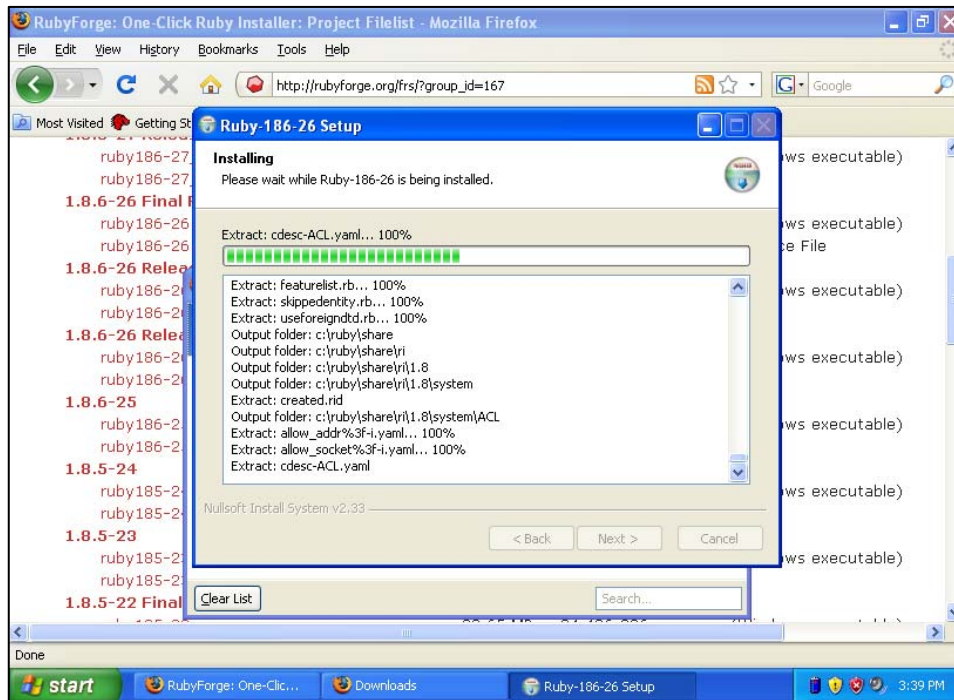
You can install ruby on any drive or folder, but for the purposes of the tutorials we will be using the default “c:\ruby” folder.



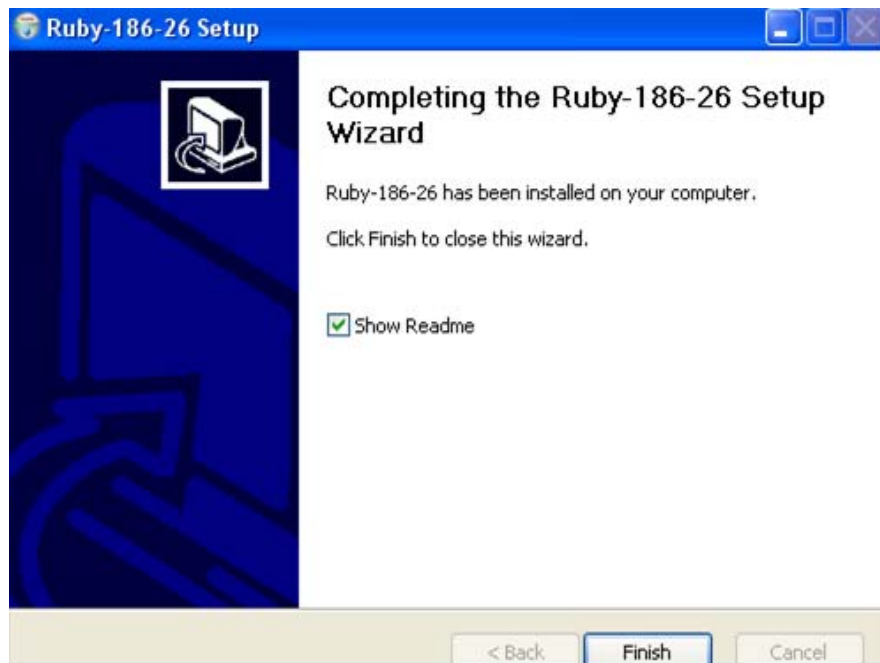
Choose the default menu location:



The installer will create a larger number of folders under the “Ruby” folder:



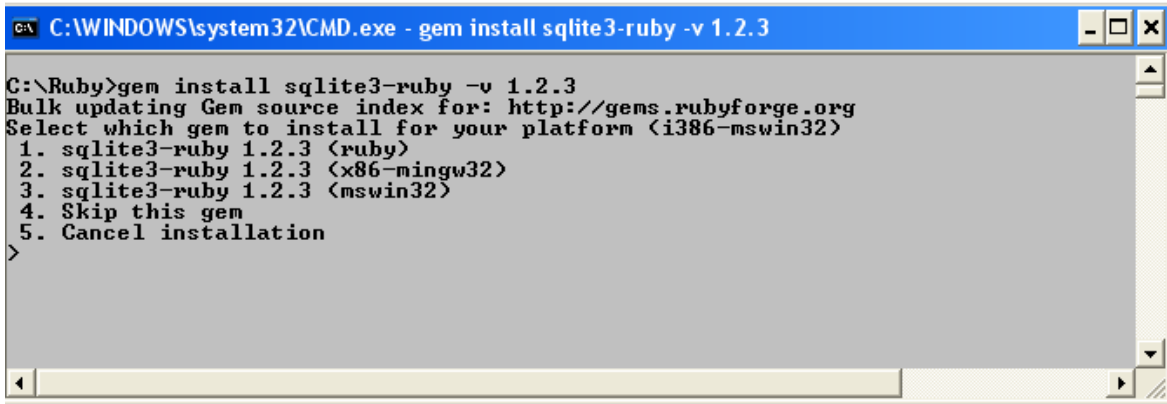
When the installation is complete you will see a popup window like the following:



2. Install the **SQLite3-ruby** gem:.

Open up the Windows command prompt (Start>Programs>Accessories>Command Prompt) and run the following from the `c:\ruby` folder.

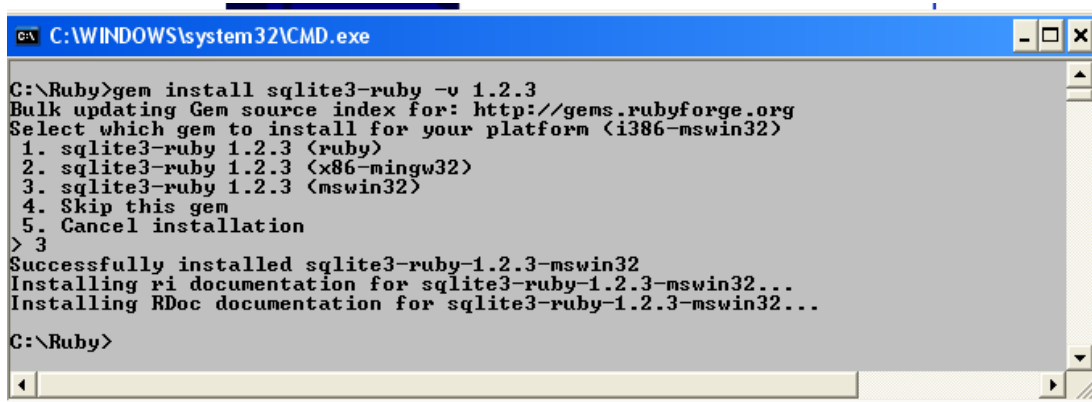
```
C:\ruby>gem install sqlite3-ruby -v 1.2.3
```



```
C:\WINDOWS\system32\CMD.exe - gem install sqlite3-ruby -v 1.2.3

C:\Ruby>gem install sqlite3-ruby -v 1.2.3
Bulk updating Gem source index for: http://gems.rubyforge.org
Select which gem to install for your platform (i386-mswin32)
 1. sqlite3-ruby 1.2.3 (ruby)
 2. sqlite3-ruby 1.2.3 (x86-mingw32)
 3. sqlite3-ruby 1.2.3 (mswin32)
 4. Skip this gem
 5. Cancel installation
>
```

If a prompt such as the following appears, select option 3. At completion you will see the following:



```
C:\WINDOWS\system32\CMD.exe

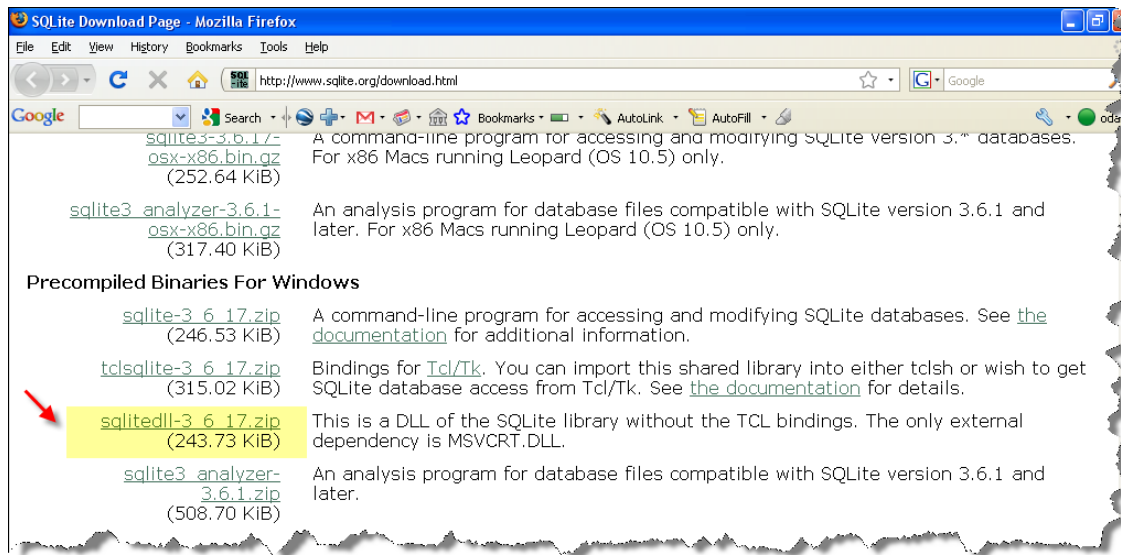
C:\Ruby>gem install sqlite3-ruby -v 1.2.3
Bulk updating Gem source index for: http://gems.rubyforge.org
Select which gem to install for your platform (i386-mswin32)
 1. sqlite3-ruby 1.2.3 (ruby)
 2. sqlite3-ruby 1.2.3 (x86-mingw32)
 3. sqlite3-ruby 1.2.3 (mswin32)
 4. Skip this gem
 5. Cancel installation
> 3
Successfully installed sqlite3-ruby-1.2.3-mswin32
Installing ri documentation for sqlite3-ruby-1.2.3-mswin32...
Installing RDoc documentation for sqlite3-ruby-1.2.3-mswin32...

C:\Ruby>
```

MS Windows PCs also require the *sqlite3.dll*. Download this from <http://www.sqlite.org/download.html> place it the “`c:\ruby\bin`” folder.

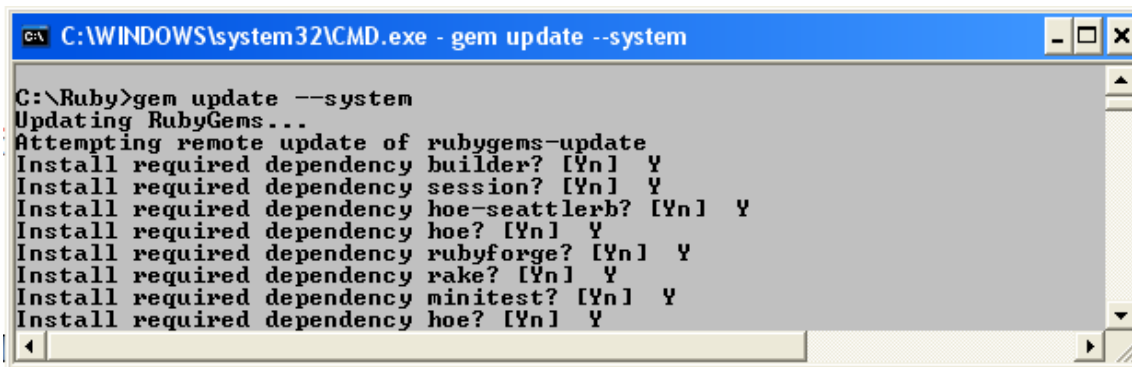
Unzip the downloaded file and place the *sqlite3.dll* and *sqlite.def* files in the `c:\ruby\bin` folder.

CHAPTER 2 – INSTALLATION



3. Update the application package installer. The application package installer for RubyGems has been significantly enhanced since the 1.8.6 release of the Ruby Windows one-click installer package. To update the latest version run this command:

```
C:\ruby> gem update --system
```



Answer ‘Y’ to all of the “Install required dependency...” prompts...

A series of status messages will scroll by similar to the following:

```

C:\WINDOWS\system32\CMD.exe
Successfully installed minitest-1.4.2
Successfully installed hoe-2.3.3
Installing ri documentation for rubygems-update-1.3.5...
Installing ri documentation for builder-2.1.2...
While generating documentation for builder-2.1.2
... MESSAGE: Unhandled special: Special: type=17, text="<!-- HI -->"
... RDOC args: --ri --op c:/Ruby/lib/ruby/gems/1.8/doc/builder-2.1.2/ri --title Builder -- Easy XML
Building --main README --line-numbers --quiet lib CHANGES Rakefile README doc/releases/builder-1.2.4
.rdoc doc/releases/builder-2.0.0.rdoc doc/releases/builder-2.1.1.rdoc
(continuing with the rest of the installation)
Installing ri documentation for hoe-seattlerb-1.2.1...
Installing ri documentation for hoe-2.3.3...
Installing ri documentation for rubyforge-1.0.4...
Installing ri documentation for rake-0.8.7...
Installing ri documentation for minitest-1.4.2...
Installing ri documentation for hoe-2.3.3...
Installing RDoc documentation for rubygems-update-1.3.5...
Could not find main page README
Could not find main page README
Could not find main page README
Could not find main page README
Installing RDoc documentation for builder-2.1.2...
Installing RDoc documentation for hoe-seattlerb-1.2.1...
Installing RDoc documentation for hoe-2.3.3...
Installing RDoc documentation for rubyforge-1.0.4...
Installing RDoc documentation for rake-0.8.7...
Installing RDoc documentation for minitest-1.4.2...
Installing RDoc documentation for hoe-2.3.3...
Updating version of RubyGems to 1.3.5
Installing RubyGems 1.3.5
RubyGems 1.3.5 installed

##### 1.3.5 / 2009-07-21

Bug fixes:
* Fix use of prerelease gems.
* Gem.bin_path no longer escapes path with spaces. Bug #25935 and #26458.

Deprecation Notices:
* Bulk index update is no longer supported (the code currently remains, but not
  the tests)
* Gem::manage_gems was removed in 1.3.3.
* Time::today was removed in 1.3.3.

-----

RubyGems installed the following executables:
  c:/Ruby/bin/gem

RubyGems system software updated

C:\Ruby>

```

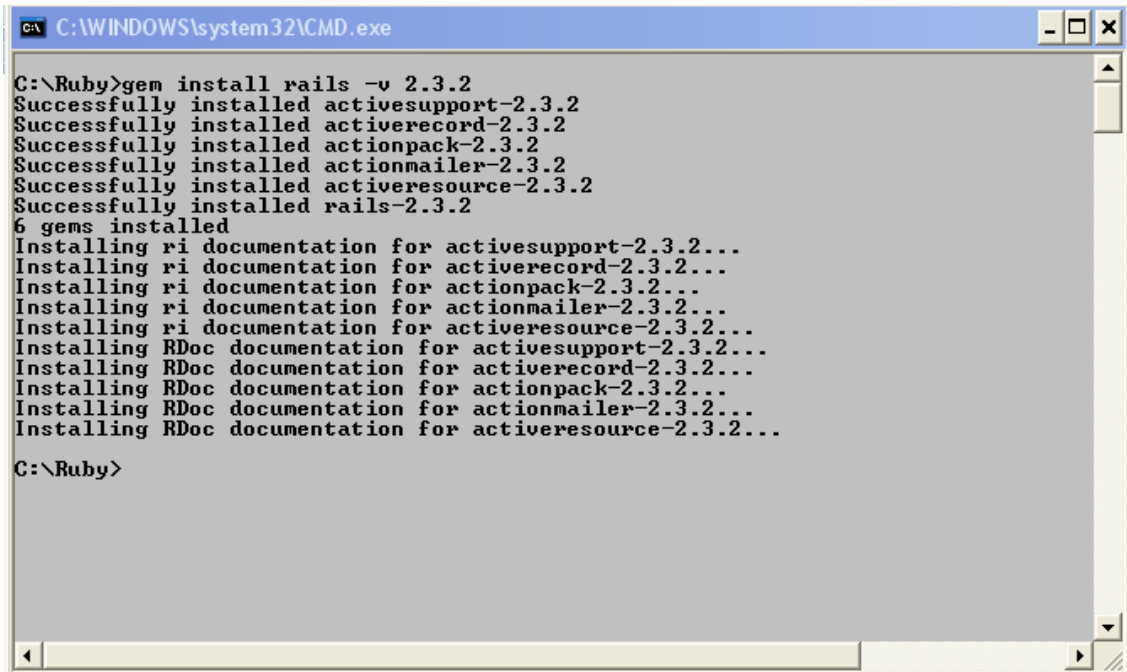
4. Add the “github” and “rubyonrails” websites as sources to look for Ruby packages:

```
C:\ruby> gem sources -a http://gems.github.com
```

```
C:\ruby> gem sources -a http://gems.rubyonrails.org
```

5. Next install the latest version of Rails. (As this writing it is version 2.3.2.)

```
C:\ruby> gem install rails -v 2.3.2
```

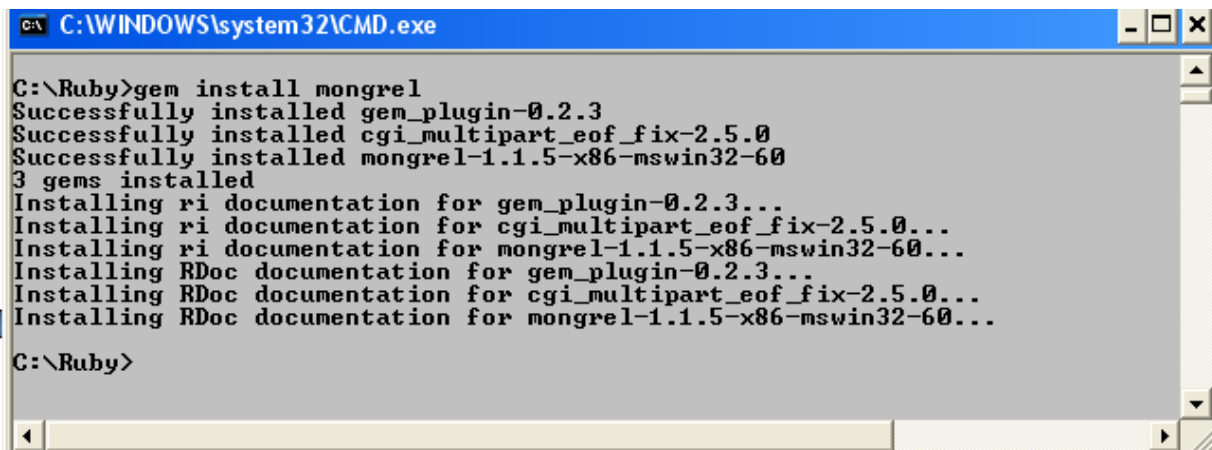


```
C:\WINDOWS\system32\CMD.exe
C:\Ruby>gem install rails -v 2.3.2
Successfully installed activesupport-2.3.2
Successfully installed activerecord-2.3.2
Successfully installed actionpack-2.3.2
Successfully installed actionmailer-2.3.2
Successfully installed activerecord-2.3.2
Successfully installed rails-2.3.2
6 gems installed
Installing ri documentation for activesupport-2.3.2...
Installing ri documentation for activerecord-2.3.2...
Installing ri documentation for actionpack-2.3.2...
Installing ri documentation for actionmailer-2.3.2...
Installing ri documentation for activerecord-2.3.2...
Installing RDoc documentation for activesupport-2.3.2...
Installing RDoc documentation for activerecord-2.3.2...
Installing RDoc documentation for actionpack-2.3.2...
Installing RDoc documentation for actionmailer-2.3.2...
Installing RDoc documentation for activerecord-2.3.2...
C:\Ruby>
```

Notice that dependent gems and documentation are automatically installed as well.

6. Install the Mongrel web server:

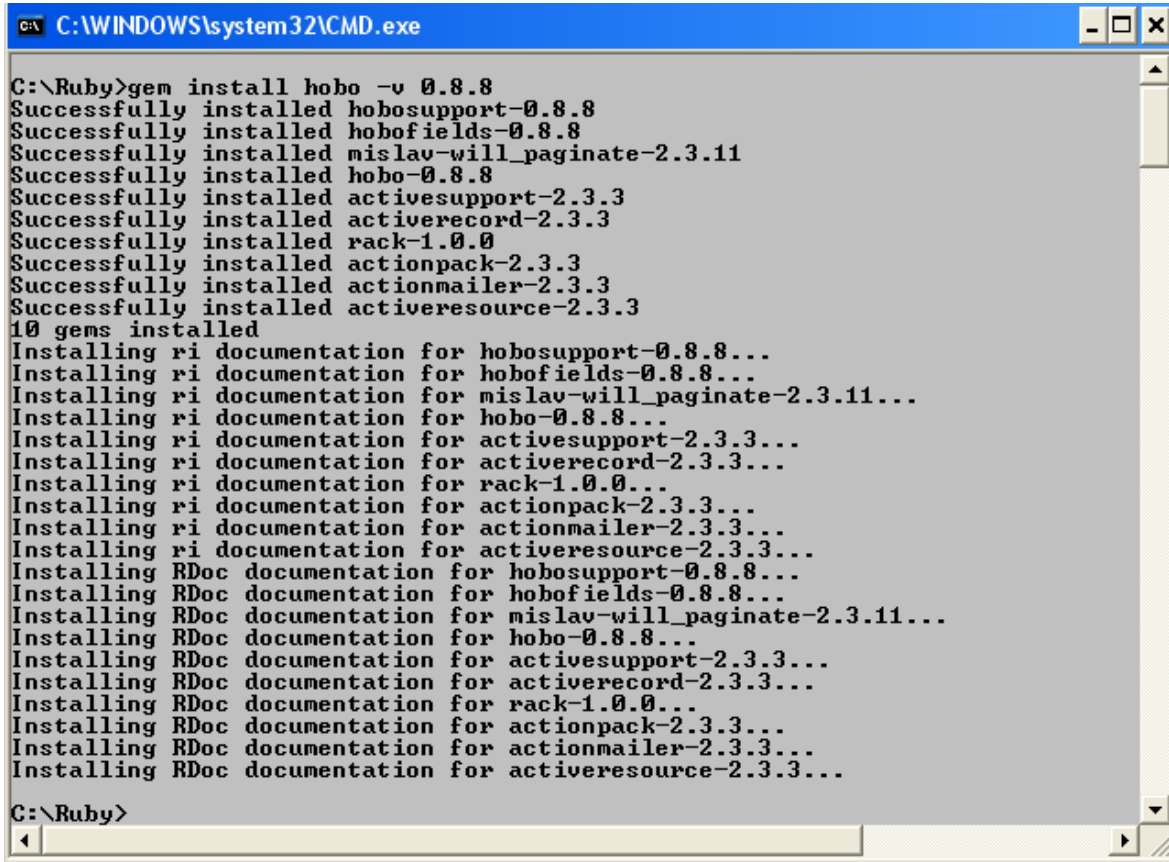
```
C:\ruby> gem install mongrel
```



```
C:\WINDOWS\system32\CMD.exe
C:\Ruby>gem install mongrel
Successfully installed gem_plugin-0.2.3
Successfully installed cgi_multipart_eof_fix-2.5.0
Successfully installed mongrel-1.1.5-x86-mswin32-60
3 gems installed
Installing ri documentation for gem_plugin-0.2.3...
Installing ri documentation for cgi_multipart_eof_fix-2.5.0...
Installing ri documentation for mongrel-1.1.5-x86-mswin32-60...
Installing RDoc documentation for gem_plugin-0.2.3...
Installing RDoc documentation for cgi_multipart_eof_fix-2.5.0...
Installing RDoc documentation for mongrel-1.1.5-x86-mswin32-60...
C:\Ruby>
```

7. Next, install Hobo: (As of August, 2009 it is version 0.8.8)

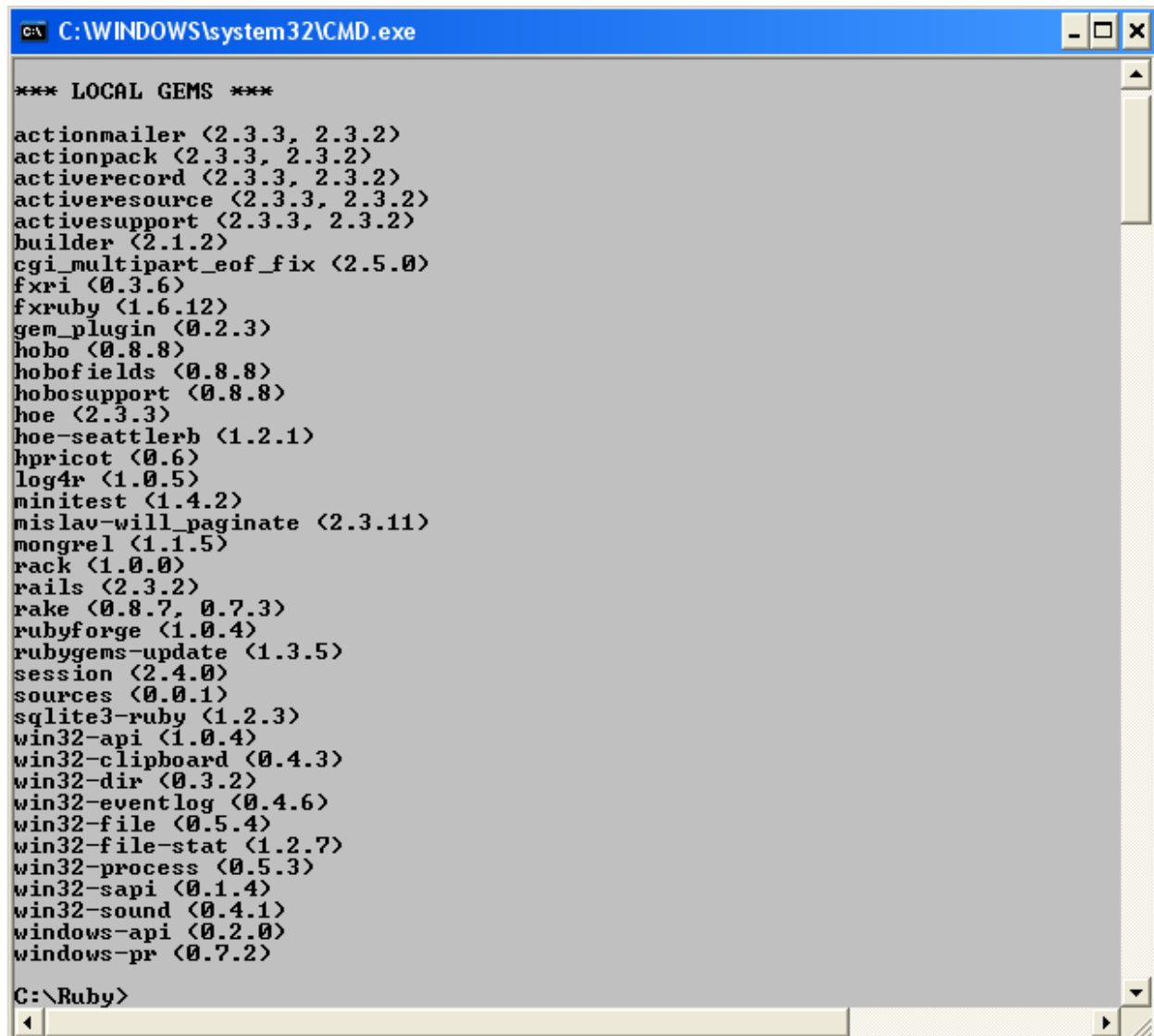
```
C:\ruby>gem install hobo -v 0.8.8
```



```
C:\WINDOWS\system32\CMD.exe
C:\Ruby>gem install hobo -v 0.8.8
Successfully installed hobosupport-0.8.8
Successfully installed hobofields-0.8.8
Successfully installed mislav-will_paginate-2.3.11
Successfully installed hobo-0.8.8
Successfully installed activesupport-2.3.3
Successfully installed activerecord-2.3.3
Successfully installed rack-1.0.0
Successfully installed actionpack-2.3.3
Successfully installed actionmailer-2.3.3
Successfully installed activerecord-2.3.3
10 gems installed
Installing ri documentation for hobosupport-0.8.8...
Installing ri documentation for hobofields-0.8.8...
Installing ri documentation for mislav-will_paginate-2.3.11...
Installing ri documentation for hobo-0.8.8...
Installing ri documentation for activesupport-2.3.3...
Installing ri documentation for activerecord-2.3.3...
Installing ri documentation for rack-1.0.0...
Installing ri documentation for actionpack-2.3.3...
Installing ri documentation for actionmailer-2.3.3...
Installing ri documentation for activerecord-2.3.3...
Installing RDoc documentation for hobosupport-0.8.8...
Installing RDoc documentation for hobofields-0.8.8...
Installing RDoc documentation for mislav-will_paginate-2.3.11...
Installing RDoc documentation for hobo-0.8.8...
Installing RDoc documentation for activesupport-2.3.3...
Installing RDoc documentation for activerecord-2.3.3...
Installing RDoc documentation for rack-1.0.0...
Installing RDoc documentation for actionpack-2.3.3...
Installing RDoc documentation for actionmailer-2.3.3...
Installing RDoc documentation for activerecord-2.3.3...
C:\Ruby>
```

8. Check your installation by using the “gem list” command to show all Ruby gems that have been installed:

```
C:\ruby>gem list
```



```
C:\WINDOWS\system32\CMD.exe

*** LOCAL GEMS ***

actionmailer (2.3.3, 2.3.2)
actionpack (2.3.3, 2.3.2)
activerecord (2.3.3, 2.3.2)
activeresource (2.3.3, 2.3.2)
activesupport (2.3.3, 2.3.2)
builder (2.1.2)
cgi_multipart_eof_fix (2.5.0)
fxri (0.3.6)
fxruby (1.6.12)
gem_plugin (0.2.3)
hobo (0.8.8)
hobofields (0.8.8)
hobosupport (0.8.8)
hoe (2.3.3)
hoe-seattlerb (1.2.1)
hpricot (0.6)
log4r (1.0.5)
minitest (1.4.2)
mislav-will_paginate (2.3.11)
mongrel (1.1.5)
rack (1.0.0)
rails (2.3.2)
rake (0.8.7, 0.7.3)
rubyforge (1.0.4)
rubygems-update (1.3.5)
session (2.4.0)
sources (0.0.1)
sqlite3-ruby (1.2.3)
win32-api (1.0.4)
win32-clipboard (0.4.3)
win32-dir (0.3.2)
win32-eventlog (0.4.6)
win32-file (0.5.4)
win32-file-stat (1.2.7)
win32-process (0.5.3)
win32-sapi (0.1.4)
win32-sound (0.4.1)
windows-api (0.2.0)
windows-pr (0.7.2)

C:\Ruby>
```

9. Finally, look at your complete installation environment with the “gem env” command:

```
C:\ruby>gem env
```



```
Select C:\WINDOWS\system32\CMD.exe
C:\Ruby>gem env
RubyGems Environment:
- RUBYGEMS VERSION: 1.3.5
- RUBY VERSION: 1.8.6 (2007-09-24 patchlevel 111) [i386-mswin32]
- INSTALLATION DIRECTORY: c:/Ruby/lib/ruby/gems/1.8
- RUBY EXECUTABLE: c:/Ruby/bin/ruby.exe
- EXECUTABLE DIRECTORY: c:/Ruby/bin
- RUBYGEMS PLATFORMS:
  - ruby
  - x86-mswin32-60
- GEM PATHS:
  - c:/Ruby/lib/ruby/gems/1.8
  - C:/Documents and Settings/odall/.gem/ruby/1.8
- GEM CONFIGURATION:
  - :update_sources => true
  - :verbose => true
  - :benchmark => false
  - :backtrace => false
  - :bulk_threshold => 1000
  - :sources => ["http://gems.rubyforge.org", "http://gems.rubyonrails.org", "http://gems.github.com", "http://gems.github.com", "http://gems.rubyonrails.org"]
- REMOTE SOURCES:
  - http://gems.rubyforge.org
  - http://gems.rubyonrails.org
  - http://gems.github.com
  - http://gems.github.com
  - http://gems.rubyonrails.org
C:\Ruby>
```

Now you are ready for the tutorials!

Note: We suggest you work through the tutorials using the default and efficient SQLite database engine. Since Hobo is database independent, you don’t need to worry about using different instructions for each database flavor. However, if you would like to jump right in using your favorite engine, see *Chapter 7: Recipes* for how to configure Hobo to use Oracle or MySQL.